



The Endoline Type 625 is a hand fed, pre-set size case taping machine designed to apply tape to the top and bottom, long flap joints of cases, producing a strong, high quality seal. It is ideally suited to short or long runs of the same size case.

Features of the 621/625 machines include:

Efficient



The 625 has a unique 'floating bridge' feature that copes with swollen or out of specification cases. This means it is less critical to obtain exact height adjustments, therefore considerably reducing changeover time.

Interchangeable Tapeheads



The 625 has two identical, easy to thread interchangeable tapeheads, which means that tape reloading time is reduced.

Flexible



The machine will work with a wide case size range with quick and easy height adjustments.

Clear Access



The machine design provides quick and easy access to the bottom tape head and the computer designed chassis reduces dirt traps for ease of cleaning and maintenance.

Ease of Operation



The machine automatically re-sets after tape loading and the simple construction allows for lower maintenance through fewer moving parts.

Robust Construction



Built to the latest CE safety standards the machines are suitable for 24 hour production with a full parts and labour warranty.

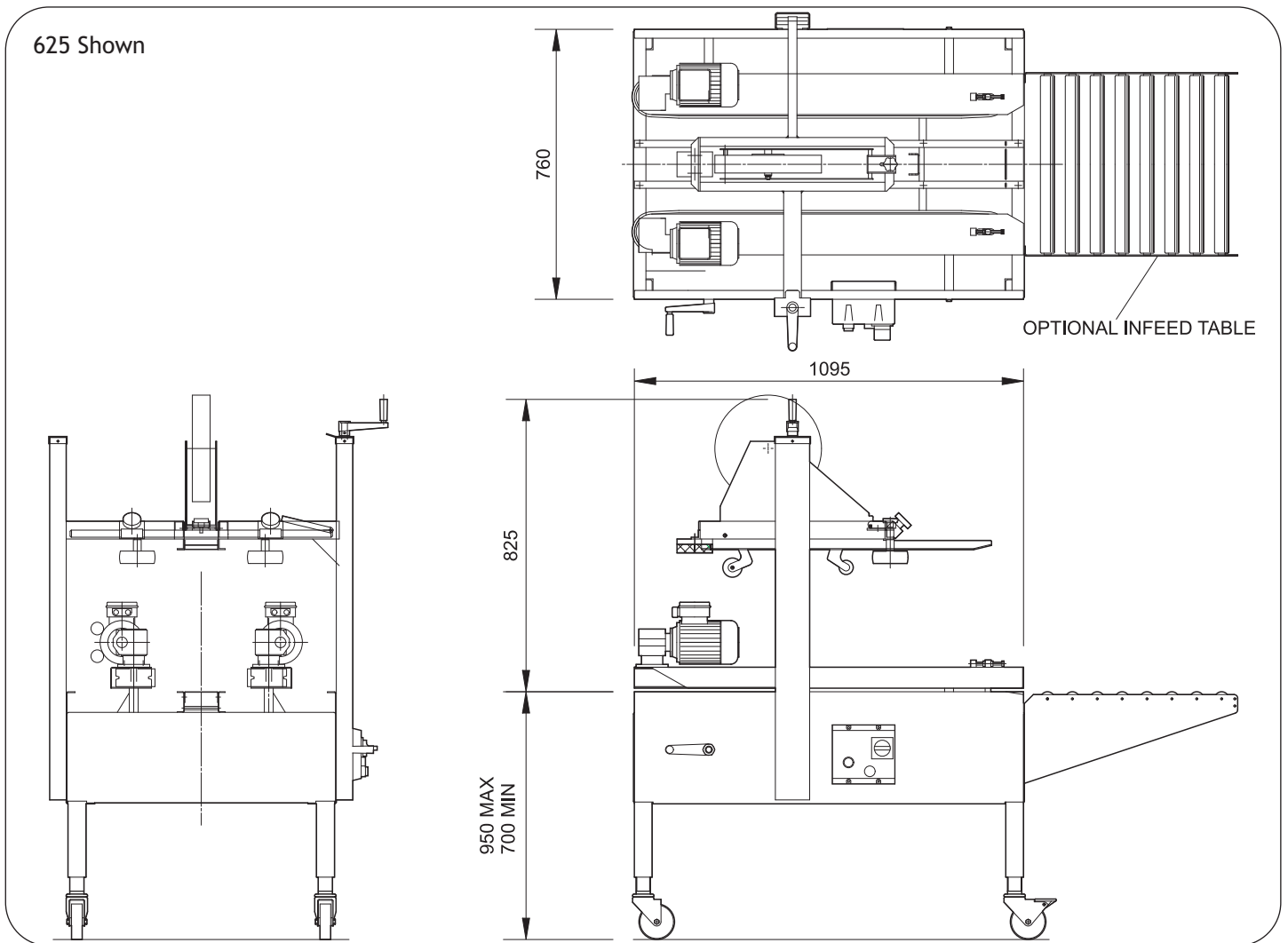


621/625

Pre-Set Semi-Automatic Case Taper

Options include:

- Type 621 machine bottom taping only



Endoline Machinery Limited
Stratton Business Park, London Road
Biggleswade, Bedfordshire
SG18 8QB
United Kingdom

Telephone: +44 (0) 1767 316422
Facsimile: +44 (0) 1767 318033
E-mail: sales@endoline.co.uk
Website: www.endoline.co.uk

Case Dimensions (mm)

	Length	Width	Height (high position)
Type 621	110 - inf	100 - 500	no top taping
Type 625	110 - inf	100 - 500	110 - 510

Electrical

Single Phase: 240V, 50Hz, 0.36kW
Three Phase: 415V, 50Hz, 0.36kW

Machine Finish

Mild steel, powder coated
white (RAL 9010) or stainless
steel

Tape Size

Standard: up to 50mm wide
Optional: up to 75mm wide

© Endoline reserves the right to change specifications without prior notice.

system